

WŁOCHY

Mediolan

Muzeum Katedralne
w Palazzo Reale

Museo del Duomo
(o [Muzeum](#))





JUDITH AND HOLOFERNES
Gaspare Vismara
Post 1639
Model for over-door panel
Terracotta Inv. MK710





FLAGELLATION
Lodovico Pogliaghi
1904
Bronze

Inv. SR 182





DEPOSITION *Brussels manufactory*
c. 1505-1510 *To cartoon by Brussels painter*
Wool, silk and gold wrap *Inv.TSA3*





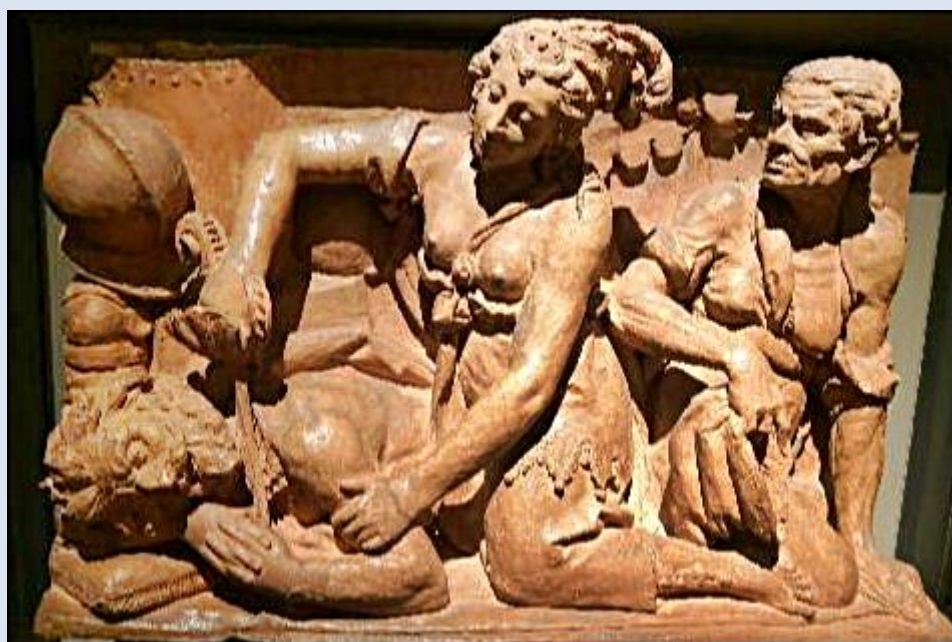
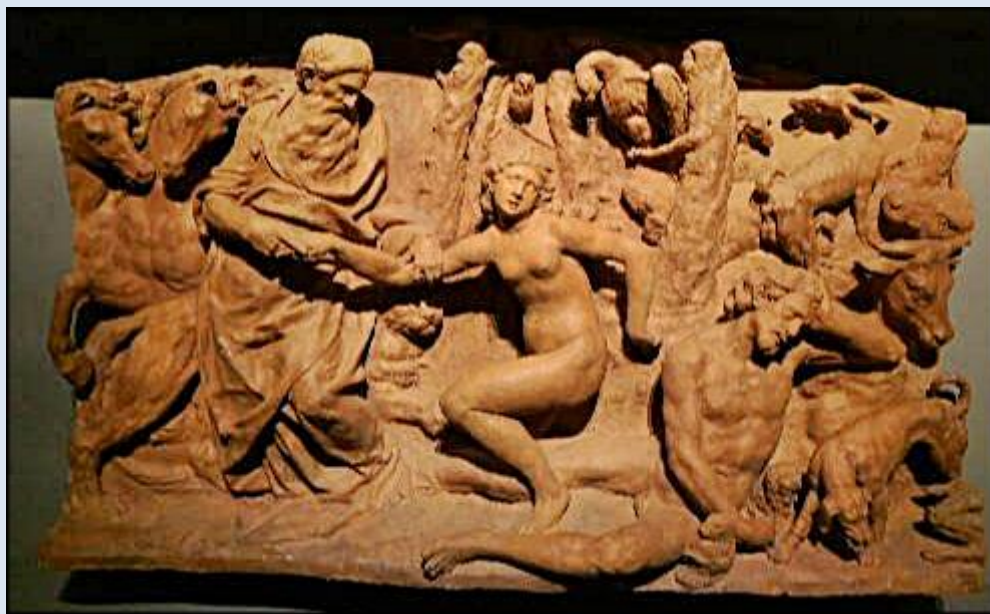
CAROLA DI ANGELI CIELINO
ANGEL'S CAROL, CIELINO
Cappella Veneziana, 1631
Terracotta
Inv. MR.712



ST AGAPITUS
Marco Antonio Prestinari 1605-1607
Bracket statue
Candoglia marble



CREATION OF EVE
Gaspare Vismara
1629
Model for over-door panel
Terracotta Inv. MR.711





PRESENTATION OF THE VIRGIN IN THE TEMPLE

Giovan Andrea Biffi 1601

Model for panel on choir-screen border

Terracotta

In: MIC 7/4



EVE
Giovan Angelo Marini
1563-1565
Candoglia marble Inv. ST155





EPISODES FROM THE PASSION OF CHRIST

*Franco-Flemish manufactory to cartoon by Flemish painter
1467-1468*

Donated by Archbishop Stefano Nardini

Wool, silk, silver and gold wools

Inv. T5A1



ADAM

Cristoforo Solari

1502-1503

Candoglia marble Inv. ST148



GOD THE FATHER

Battista da Corbetta (?) 1554 (?)

Gilded and painted carved wood Inv. ST146



ANGEL WITH CROWN OF THORNS

*Lombard sculptor
Last quarter of 15th cent.*

Candoglia marble

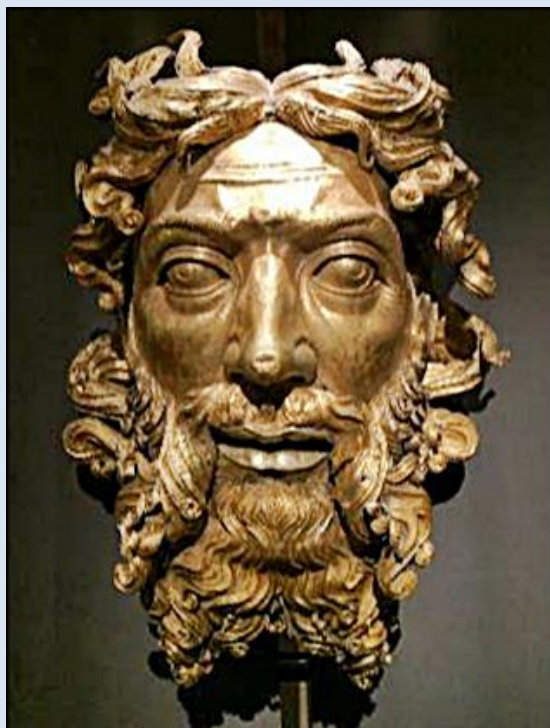
Inv. 1112











GOD THE FATHER
Beltramo de Zutti
1416-1425
Keystone of apse conch
Embossed silvered and gilded copper











zdjęcia: Kamila Nitecka