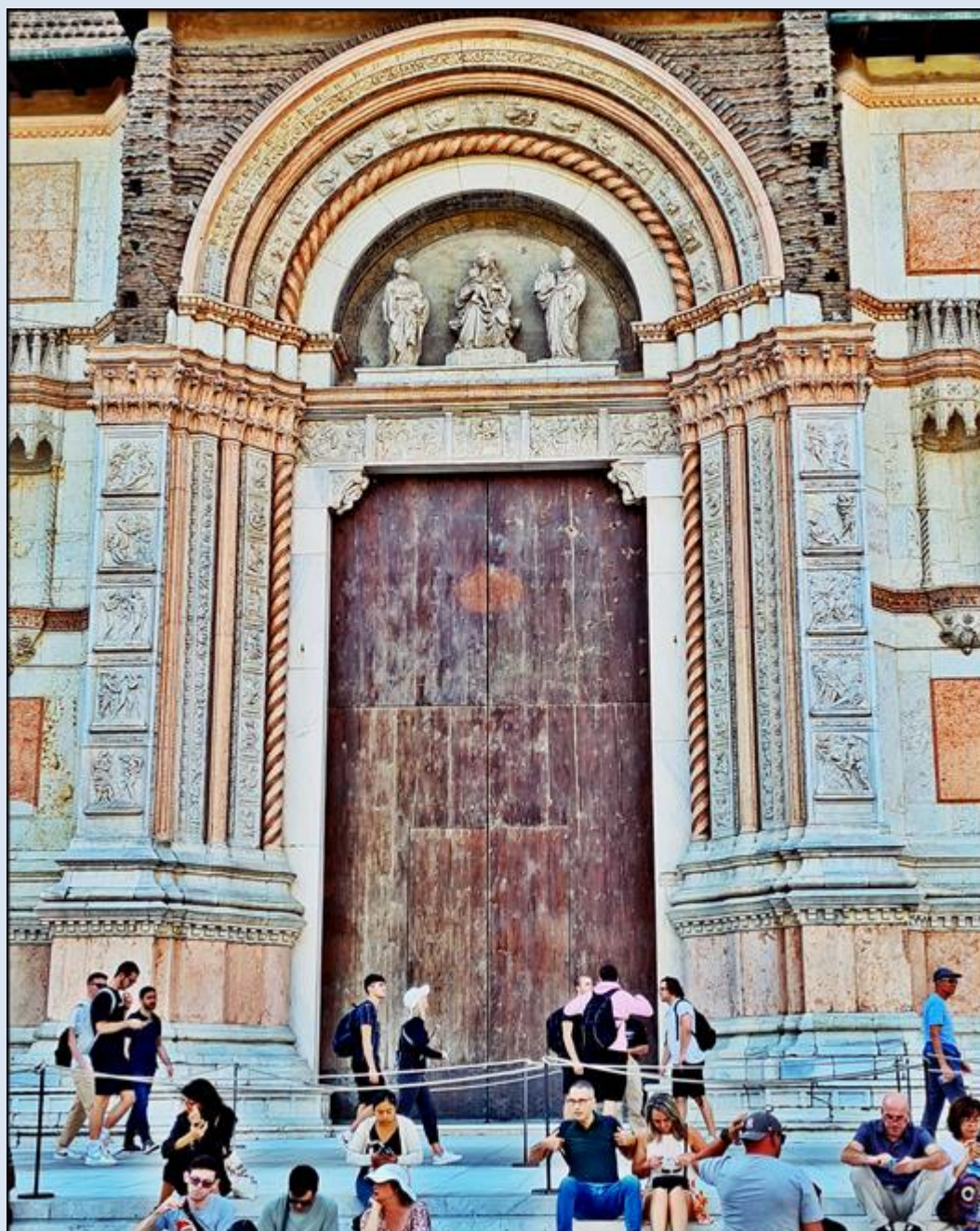


WŁOCHY

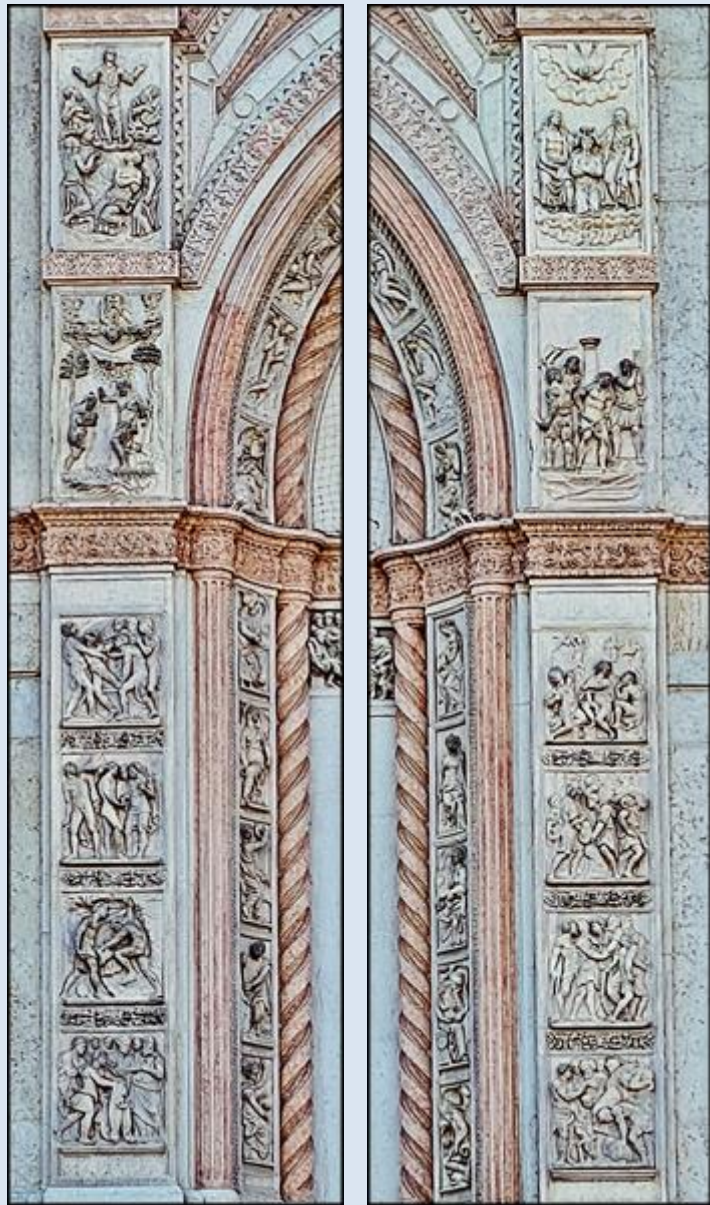
Bolonia

Bazylika pw. św.
Petroniusza,
głównego Patrona Bolonii

Basilica di San Petronio

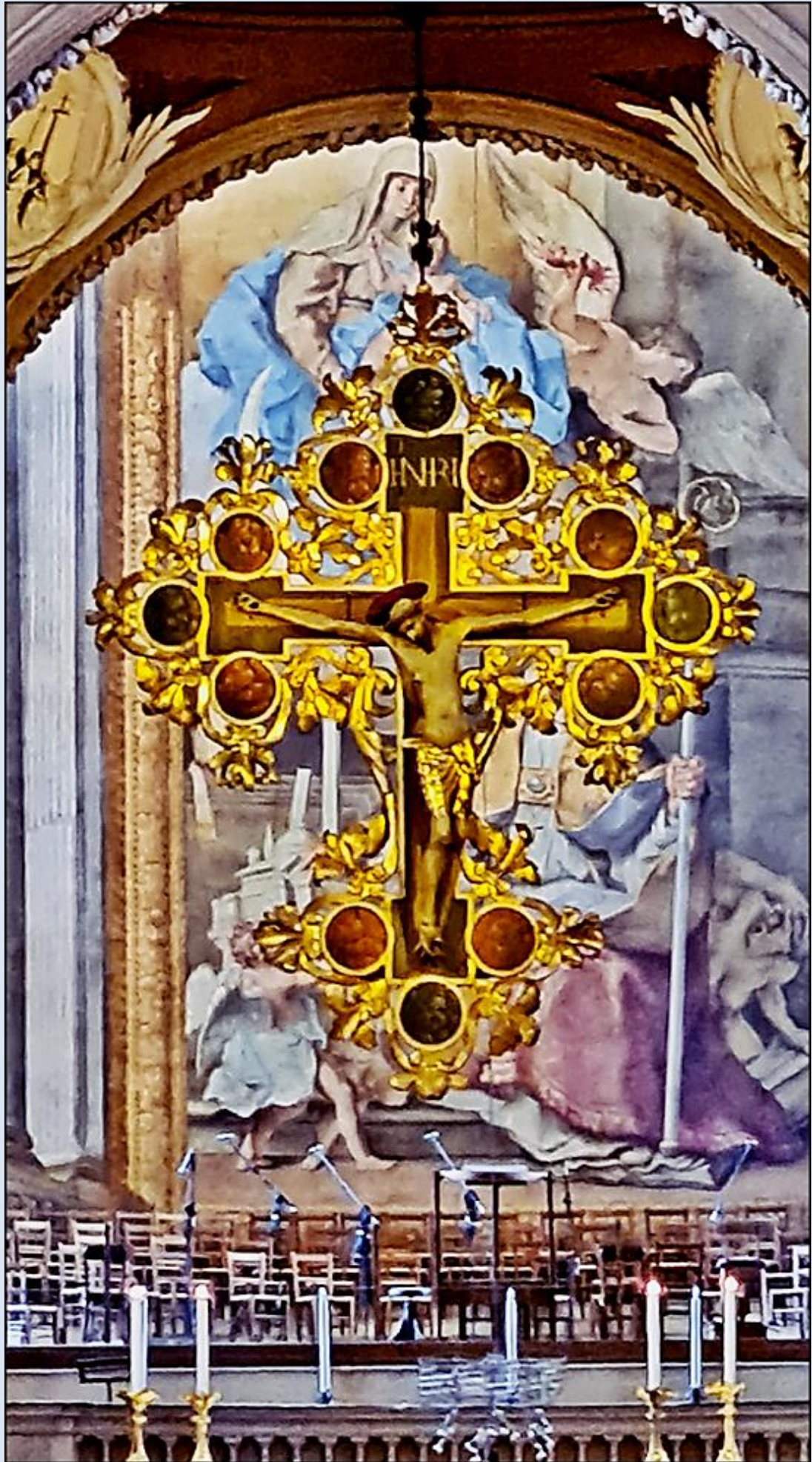












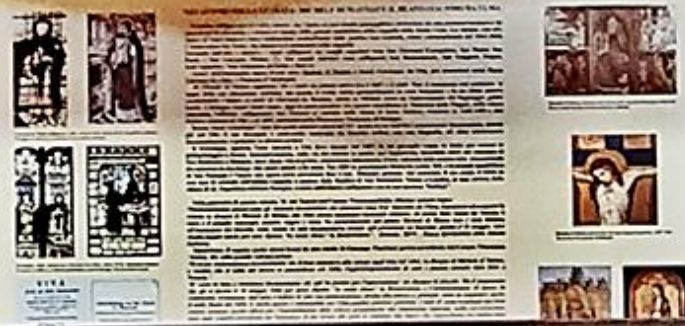








THE SEATED FIGURE IN THE CENTRAL MEDALLION IS A REPRESENTATION OF THE GODDESS ISHTAR, WHO WAS ASSOCIATED WITH WAR, LOVE, AND SEXUALITY. SHE IS SHOWN HERE SEATED ON A THRONE, HOLDING A SCEPTER AND A BOW, WHICH ARE SYMBOLS OF HER POWER AND DOMINANCE. THE FIGURE IS SURROUNDED BY A RING OF SMALLER, COLORFUL, WINGED FIGURES, WHICH ARE REPRESENTATIONS OF THE GODDESS'S ATTENDANTS OR MESSENGERS. THESE FIGURES ARE ARRANGED IN A CIRCULAR PATTERN, AND EACH ONE HAS A DISTINCT FACE AND A BLUE OR YELLOW BODY. THE ENTIRE SCENE IS ENCLOSED WITHIN A CIRCULAR FRAME WITH INTRICATE CARVINGS, WHICH MAY REPRESENT A COSMOS OR A SACRED SPACE. THE RELIEF CARVING IS MADE OF STONE AND IS LOCATED IN AN ANCIENT TEMPLE IN MESOPOTAMIA. THE CARVING IS A MAJOR WORK OF ART AND IS A TESTAMENT TO THE SKILL AND CREATIVITY OF THE ANCIENT MESOPOTAMIAN ARTISTS. THE RELIEF CARVING IS A MAJOR WORK OF ART AND IS A TESTAMENT TO THE SKILL AND CREATIVITY OF THE ANCIENT MESOPOTAMIAN ARTISTS.



1. A small image of a seated figure, possibly a deity or saint, similar to the central medallion.

2. A small image of a seated figure, possibly a deity or saint, similar to the central medallion.

3. A small image of a seated figure, possibly a deity or saint, similar to the central medallion.

4. A small image of a seated figure, possibly a deity or saint, similar to the central medallion.

5. A small image of a seated figure, possibly a deity or saint, similar to the central medallion.

6. A small image of a seated figure, possibly a deity or saint, similar to the central medallion.

7. A small image of a seated figure, possibly a deity or saint, similar to the central medallion.

8. A small image of a seated figure, possibly a deity or saint, similar to the central medallion.

9. A small image of a seated figure, possibly a deity or saint, similar to the central medallion.

10. A small image of a seated figure, possibly a deity or saint, similar to the central medallion.











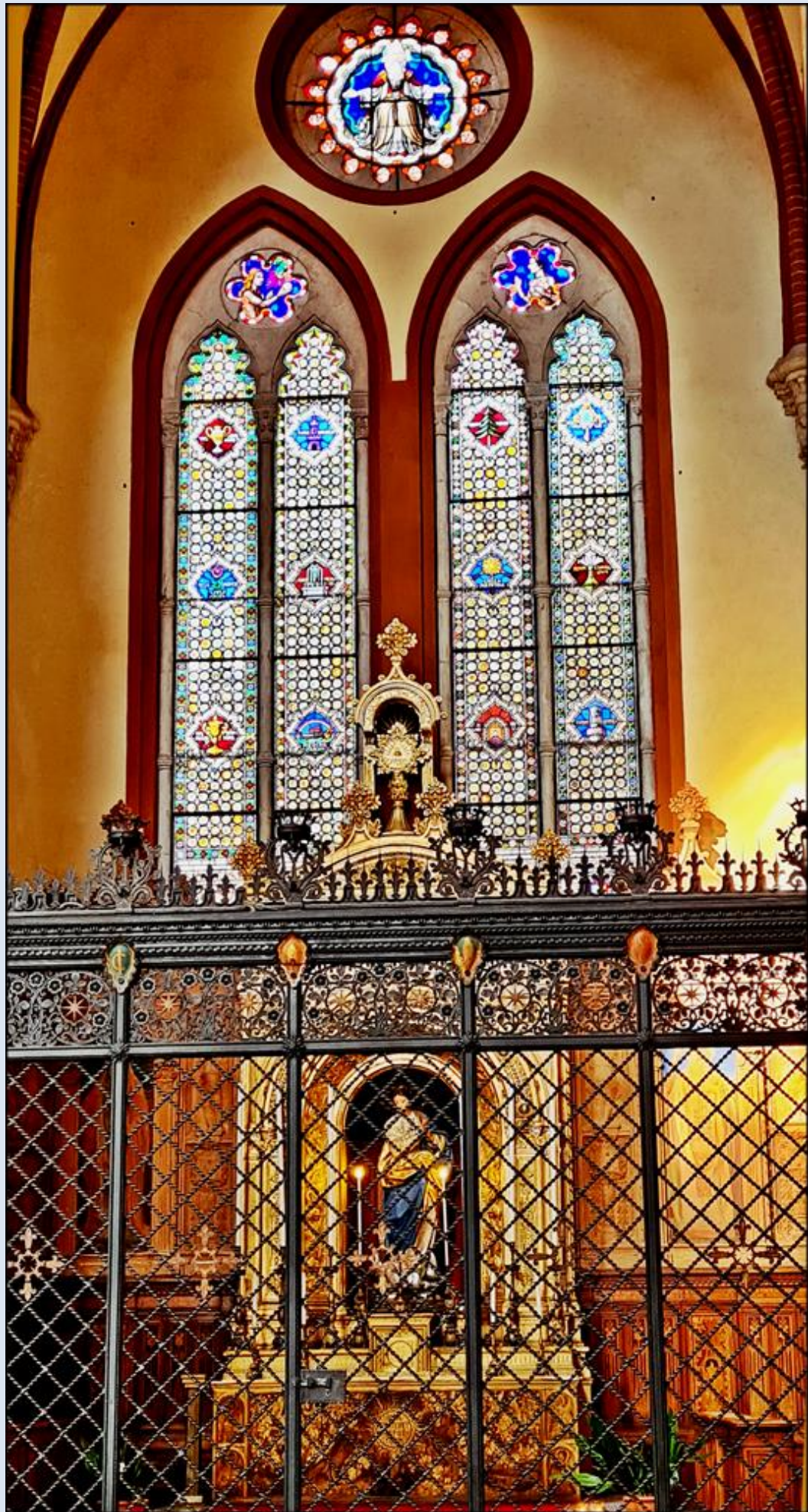
MISERANDO ATQUE ELIGENDO



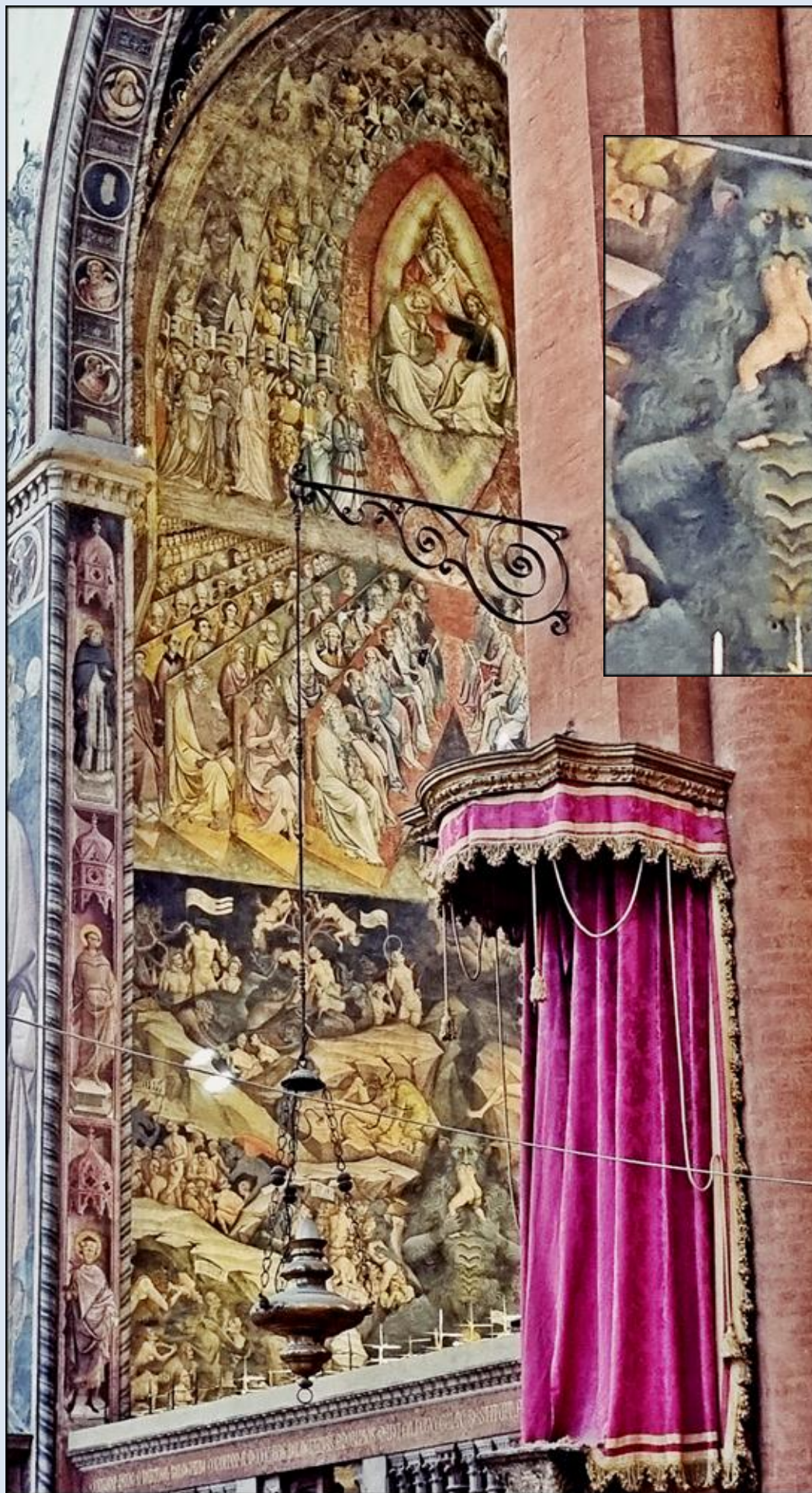




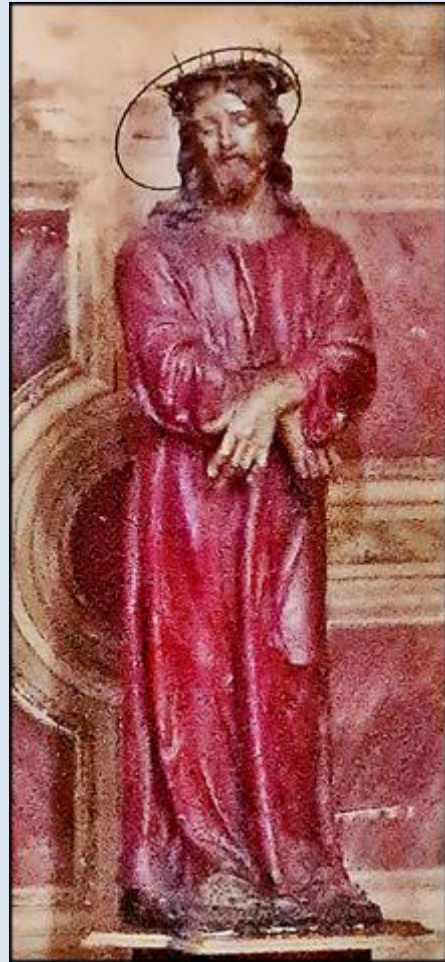
ITALIAM ERGO A BARTHOLOEO BOLOGNINO CONDITAM ET SUCCESSIVE BOLOGNENSIS IMPERIIUS AMPLIATA HOMO CIVITATEM INVIOLATAM ET







słynna boczna ściana kaplicy z malowidłem nieba, czyśćca i piekła z diabłem pożerającym ludzi















zdjęcia: as oraz pw

[POWRÓT DO STRONY GŁÓWNEJ IKONOGRAFII](#)